



LANDBÚNAÐAR-  
STOFNUN

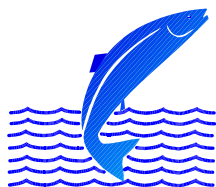
Agricultural Authority of Iceland

**Icelandic Salmon, Trout and Charr  
Catch Statistics 2006**

**Guðni Guðbergsson**

**May 2007**

**VMST/07024**



**VEIÐIMÁLASTOFNUN**

**Institute of Freshwater Fisheries**

## CONTENTS

INTRODUCTION.....	1
METHODS.....	2
RESULTS.....	3
The catch in 2006.....	3
Age composition of the salmon catch.....	4
DISCUSSION.....	5
REFERENCES.....	7
FIGURES .....	8-11
TABLES.....	12-25

## INTRODUCTION

There are five native fish species in freshwater in Iceland. These are the salmonid species, Atlantic salmon (*Salmo salar*), brown trout (*Salmo trutta*) and arctic charr (*Salvelinus alpinus*). The other two are, European eel (*Anquilla anquilla*) and three-spined sticklebacks (*Gasterosteus aculeatus*). Of these species salmon has the highest economic value.

The fishing season in Icelandic rivers is 3 1/2 months during the period from 20<sup>th</sup> of May to 30<sup>th</sup> of September. The daily fishing period is 12 hours, between sunset to dawn, and fishing is always closed between 3 AM to 7 AM. In most Icelandic rivers rod and line is the only fishing gear allowed. Only a fixed number of rods are used in each river as decided by the Directorate of Freshwater Fisheries. In the early 1970s when the number of rods allowed in each river was decided a rule of thumb of 1 fish/day/rod, on the average was applied. The fishing effort has remained almost unchanged for the past 30 years.

Net fishery is almost exclusively in the largest glacial rivers. In the net fishery gillnets are the most common fishing method and draftnet are used on few places. The weekly net fishing period is from Tuesday morning at 10 AM to Friday evening at 10 PM. The weekend closure is to allow fish migration to the up rivers regions.

There has been a general ban on ocean salmon fishing in Icelandic waters since 1932. An exception to that were 5 localities in the western part of Iceland (Vesturland) (Figure 1). At these localities coastal gillnets were used. These fishing rights were permanently bought out in 1998 by fishery associations in nearby rivers and with governmental support. This was possible since salmon caught by anglers are of much higher value than salmon caught in the net fishery. All salmon harvested in Iceland is in freshwater and mostly based on single stock fishery.

The fishing rights go with the ownership of the land adjacent to the rivers. The landowners are usually farmers. All the landowners of the fishing rights in a river system have by law to form a fishery association, which manages the exploitation of the fish stocks, within the frame set by the law. Usually the fishery association rents or leases the fishing rights to angling clubs or directly to anglers. The entire riverbank is accessible to the limited number of rods allowed. Most rivers have fishing lodges with high quality accommodation.

The catch is recorded in special logbooks in the fishing lodges. The logbook recordings were established in 1946. At the end of each fishing season the logbooks from every river are gathered and statistical information are processed by the Institute of Freshwater Fisheries. The results are sent back to the fisheries associations as well as new logbooks before the next fishing season.

Statistics from Icelandic rivers for the 2006 fishing season have now been processed and the main results are summarized in this report. This work is based on Gudbergsson (2007), *Lax- og silungsveiðin 2006*, a report from the Institute of Freshwater Fisheries (in Icelandic). Statistics have been compiled this way since 1974.

## **METHODS**

Iceland is divided into statistical regions regarding salmon catches (Figure 1). Information on the catch in each region is summarized in tables. The results from all regions are then combined for the whole country. The catch statistics for each river is summarized by fishing gear used. The harvesting methods used are rod and line, gillnets or draftnets. In previous years ocean ranching harvest has also been summarised. However, there has not been any release of smolts for commercial ocean ranching of salmon since 1998.

By tradition, the weight of freshwater fish in Iceland was measured in pounds where 1 pound = 500 g. Before the 1999 fishing season this was changed to kg and the accuracy of 0,1 kg was anticipated. Fish length is measured to the nearest cm. For each fish, date of catch, pool name and number, bait and catch and released, as well as of the fisherman is recorded in the logbook. Fishing pools are commonly numbered in the logbooks for ease of computer processing.

The salmon catch can be divided by weight into grilse (1SW, one sea winter) and salmon (2SW, two sea winter). Males up to 4 kg and females up to 3.5 kg are grilse and larger fish are salmon. This deviation in to sea age has been confirmed with aging by scales. Salmon with more than 2 winters at sea are rare in Iceland and repeated spawning has been in low percentages in later years.

Brown trout and arctic charr are caught in many rivers as a by-catch with the salmon. In other rivers these are the most dominant species. In some rivers brown trout and arctic charr are the

dominant species at certain areas of the rivers especially at slow flowing areas at the lower parts of the rivers. In this report stationary trout and sea-trout were combined, and the same applies for sea-run arctic charr and stationary arctic charr.

In the rod fishery catch-and-release has been increasing in popularity and is on voluntarily basis by the anglers. In most recent years, anglers have been encouraged by the Institute of Freshwater Fisheries, the Federation of Icelandic river owners and the Association of Icelandic angling clubs to release two-sea winter salmon in order to protect the two-sea winter salmon stock component that have steadily declined in number since the mid 1980s. The catch statistics is processed for both the total catch including catch and released and the catch landed.

## **RESULTS**

### **The catch in 2006**

A total of 45.545 salmon were caught in rod fisheries in Icelandic rivers in 2006 where of 8.735 (19,2%) was released and the catch landed (caught and retained) was 36.810 salmon (Table 1). The catch landed was 96.744 kg by weight. In the rod fishery the catch of grilse (1SW) were 32.244 fish and 74.502 kg and 4.566 salmon (2SW) weighing 22.242 kg. Of the released fish 5.785 (15,2%) were grilse and 2.850 (39,3%) salmon. Of the statistical regions the highest number of fish was caught in the rod fishery was in Vesturland 16.125 fish where off 1.964 was released and the catch landed 14.161 fish and 34.534 kg. There were lower catch recorded in other areas (Table 1).

The catch in the net fisheries was in total 5.953 fish and 16.544 kg. The highest number of fish was caught in Suðurland, 5.661 fish (Table 2). Of the net catch 4.455 and 13.876 kg was grilse (1SW) and 1.498 and 2.2668 kg was salmon (2SW). There were no reports of harvest from ocean ranching in 2006.

The total combined salmon catch landed (rod and nets) in Iceland 2006 was 42.763 fish and 113.288 kg where off 36.699 were 1SW and 6.064 2SW. The 1SW catch was 88.378 kg and 2SW catch was 24.910 kg (Table 3).

The total number of brown trout caught in rod fishery was 42.704 fish where off 8.204 were released and the catch landed 34.500 fish and 38.350 kg (table 4). The total number of Arctic

charr in rod fishery was 29.704 fish where off 846 was released and the catch landed 28.858 fish and 22.358 kg.

The salmon catch in 2006 decreased from 2005 by 9.623 fish (17,4%) from the 2005 salmon season (table 5; figure 2). The catch in 2006 was 27,5% higher than the average catch in the 32 years period from 1974 to 2005. The catch in 2006 was the 7.th highest in the period. The salmon catch in the net fishery was 21,2%) lower than the catch in 2005 and the catch was close to the half of the average catch in the period from 1974-2005 (Table 5, Figure 3).

No ocean ranching activities have been since 1998. In previous years, substantial activities of ocean ranching with Atlantic salmon was operated in Iceland reaching up to 168 thousand fish caught in 1993 (Table 5; Figure 4).

The highest number of salmon caught in rod fishery was in River Ytri-Rangá 4.459 fish with Selá in second place with 2.726 fish and Eystri-Rangá in third place with 2.471 salmon. The list of top 10 salmon rivers is shown in table 6. The top 3 list for catch landed was Ytri-Rangá, Eystri-Rangá and Norðurá.

The top 10 list of brown trout is shown in table 7 and the top 10 list of Arctic charr is shown in table 8. Since 1987, the catch of brown trout has increased with record catch in 2005 (Figure 5). The catch if Arctic charr have been decreasing since 2001 (Figure 6).

The rod catch records for individual rivers are listed by statistical areas in tables 9-15. The salmon catch in most Icelandic rivers are listed in table 16 in the period form 1974-2006 including average catch, maximum and minimum catch in the period. The rod catch for brown trout from 1987-2006 is listed in table 17 and for Arctic charr in table 18.

The catch in the net fishery divided by species, rivers and regions is listed in table 19. The highest catch was in River Þjórsá that is a glacial river in Southwest Iceland.

### **Age compositions of the salmon catch**

The sea-age composition of salmon is shown in figure 7. The figure includes the rivers with yearly catch records since 1970 and includes at the average 88% of the annual salmon catch. It is worth nothing that after high catch in the 1980s the catch of 1SW salmon decreased after 1979 and improved after 1985. The 2SW salmon showed similar pattern but instead of improving like the 1SW fish the 2SW salmon stock component have shown a steady decline

since the mid 1980s. This decline in number of 2SW salmon continued in 2006. This is of concern and anglers are kindly asked to release 2SW females in order to prevent the 2SW component from over fishing and to conserve the 2SW genetic resource. If the decline of 2SW fish will continue declining at the same rate as in previous years it will be almost distinct in 2020.

## **DISCUSSION**

Since 1932 there has been a general ban on ocean fishery for salmon in Icelandic waters with the exception of few locations with coastal fishery. The number of nets used in river has been decreasing due to lease of nets and buy-out of fishing rights, by anglers and river owners. Now the fishing rights in coastal areas have been bought-out permanently with support from the government. Since the 1998 fishing season all salmon were harvested in freshwater. The number of rods allowed and used in Icelandic salmon rivers has been almost the same for the past 36 years. With stable effort the catch can to large extent be used as an indicator for the size of the salmon run. It can also be seen from the catch statistics that the salmon catch in rivers in the same area show similar fluctuations.

The proportion of 2SW fish is usually higher in rivers in the north and northeast Iceland than in the south and southwest. Since 1981-1983 the number of 2SW salmon has been declining. This happens although the sex ratio of the run is stable with close to 65% females for MSW and 20% for 1SW for the period from 1973. That relates to higher mortality at the second year at sea in the later years (Gudbergsson and Gudjonsson 2003). The reasons for this is not clear but this seems to be connected to environmental factors in the ocean (Gudjonsson et al. 1995) that are most likely poor conditions at the feeding grounds for salmon at their second year at sea. These changes have more effects to the catch in rivers with high proportion of 2SW salmon.

There are considerable fluctuations between years in the salmon catch in Iceland. Usually salmon catch in rivers in the same region fluctuate together. The size of the salmon run depends on the number of smolts produced in each river and their survival at sea. It seems to be that common factors affect the production of smolts in the rivers in the same area and also the return rate from the ocean. Climatic factors are of greatest importance and significant correlation has been found between the catch of grilse and ocean temperature at the time the smolts are migrating in the spring or early summer (Scarnecchia 1984; Antonsson et al. 1996).

The exploitation rate in the rod fisheries, in Icelandic rivers, has been estimated to be between 30-80% (Gudjonsson 1986). Recent information on exploitation in the rod fishery indicates that it can, in some rivers, be 50-60% for 1SW salmon and 60-80% (Gudjonsson et al. 1996). In rivers with fish counters it has been shown that the rod catch reflects the changes in stock size. Further studies on exploitation and the size of the spawning stock in Icelandic salmon rivers are needed.

The numbers of brown trout increased with record catch in 2005. Catch of Arctic charr have, on the other hand been decreasing during the past five years. The reasons for the decline in catch of Arctic charr is not known but can possibly be related to global warming. This needs further studies.

Anglers are encouraged to record the trout and charr catch in the same manner as the salmon catch i.e. record each fish with information on length weight and sex of each fish. The catch records give valuable information on fluctuation in salmon stocks and stock compositions. The catch is also an indicator on the prospects of catch in rivers and for evaluation the price of fishing licences.



## REFERENCES

Antonsson, Th., Gudbergsson, G. and Gudjónsson, S. 1996. Environmental continuity in fluctuation of fish stocks in the North Atlantic Ocean, with particular reference to Atlantic salmon. *North American Journal of Fisheries Management* 16:540-547.

Gudbergsson, G. 2007. Lax- og silungsveiðin 2006. Report from The Institute of Freshwater Fisheries, VMST-R/0609. 26 pp.

Guðni Guðbergsson og Sigurður Guðjónsson 2003. Marine mortality of Atlantic salmon in Iceland. pp 110-114. In: *Marine mortality of Atlantic salmon, *Salmo salar* L: methods and measures.* E.C.E. Potter, N. Ó Maoiléigh og G. Chaput (Eds.) Canadian Science Advisory Secretariat. Research Document 2003/101.

Gudjónsson, Th. 1986. Exploitation of Atlantic Salmon in Iceland. In: *Atlantic Salmon: Planning for the future.* (ed.) Derik Mills and David Piggins.

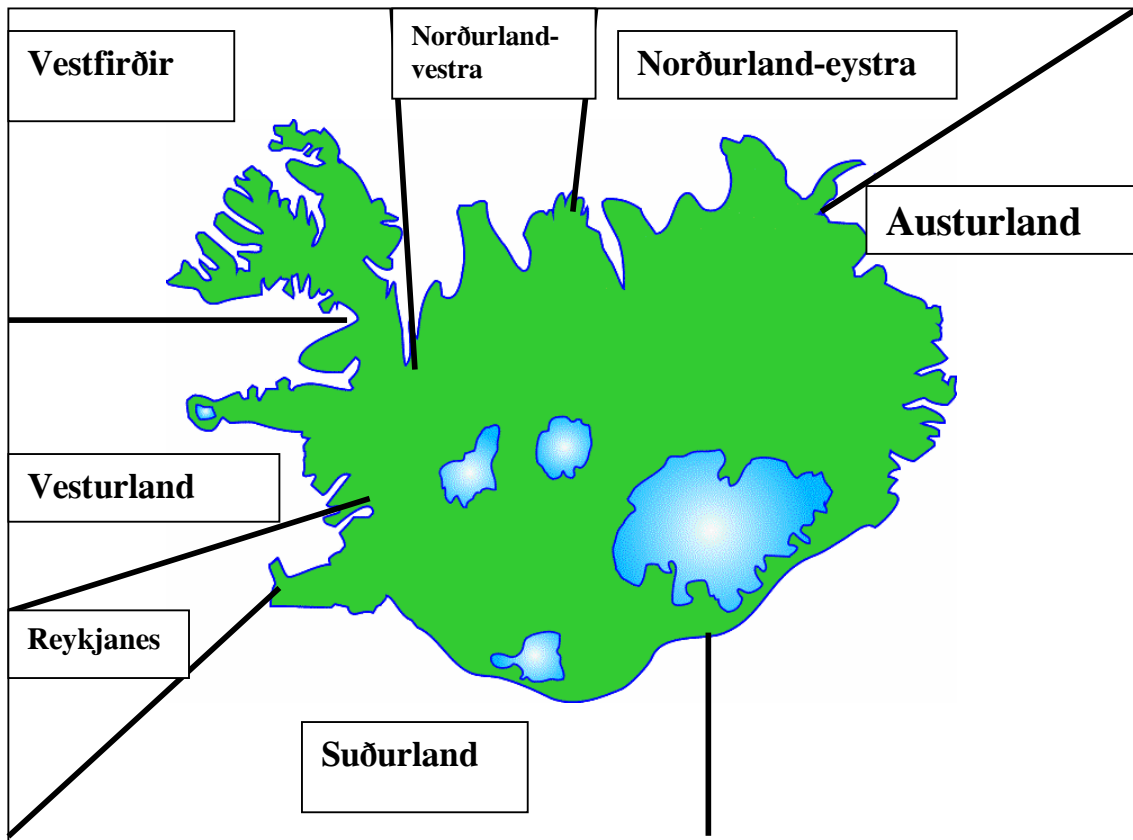
Gudjónsson, S. Einarsson, S.M., Antonsson, Th. and Gudbergsson, G. 1995. Relation of grilse/salmon ratio to environmental changes in several wild stocks of Atlantic salmon (*Salmo salar*) in Iceland. *Can. J. Fish. Aquat. Sci.* 52:1385-1398.

Scarnecchia, D.L. 1984. Climatic and oceanic variations affecting yield of Icelandic stocks of Atlantic salmon. *Can. J. Fish. Aquat. Sci.*, Vol 41, pp 917-935.

Scarnecchia, D.L. 1984. Forecasting yields of two-sea-winter Atlantic salmon (*Salmo salar*) from Icelandic Rivers. *Can. J. Fish. Aquat. Sci.*, 8:1234-1240.

Scarnecchia, D.L., Isaksson, A., White, S.E. 1989. New and revised catch forecasts for two-sea-winter Atlantic salmon (*Salmo salar*) in Icelandic rivers. *J. Appl. Ichthyol.* 5:101-110.

Figure 1. Statistical regions for the Atlantic salmon, brown trout and Arctic charr catch in Iceland.



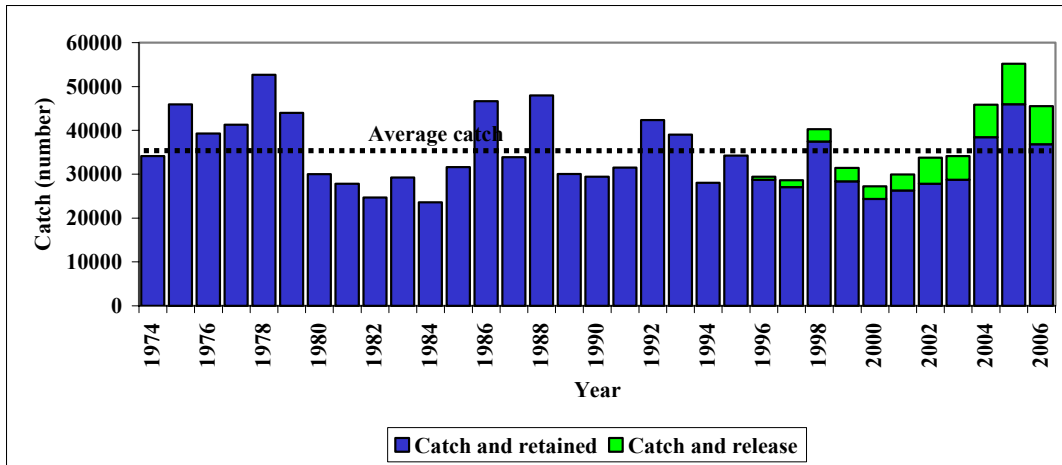


Figure 2. Salmon catch in rod and line fishery in Iceland 1974 - 2006.

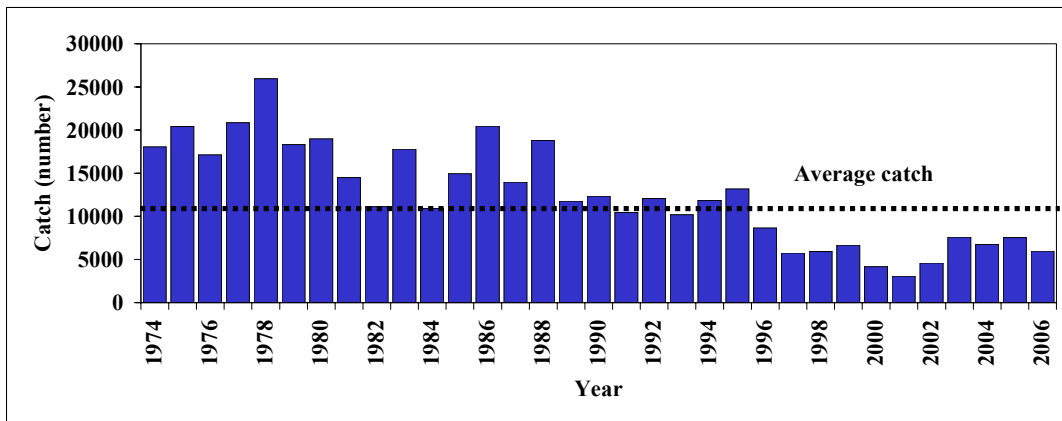


Figure 3. Salmon catch in gillnet fishery in Iceland 1974 - 2006.

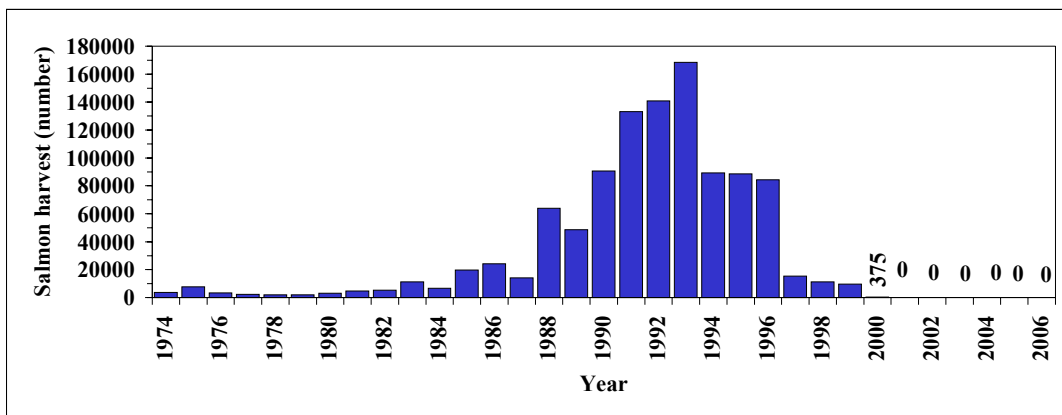


Figure 4. Salmon harvest in ocean ranching in Iceland 1974-2006.

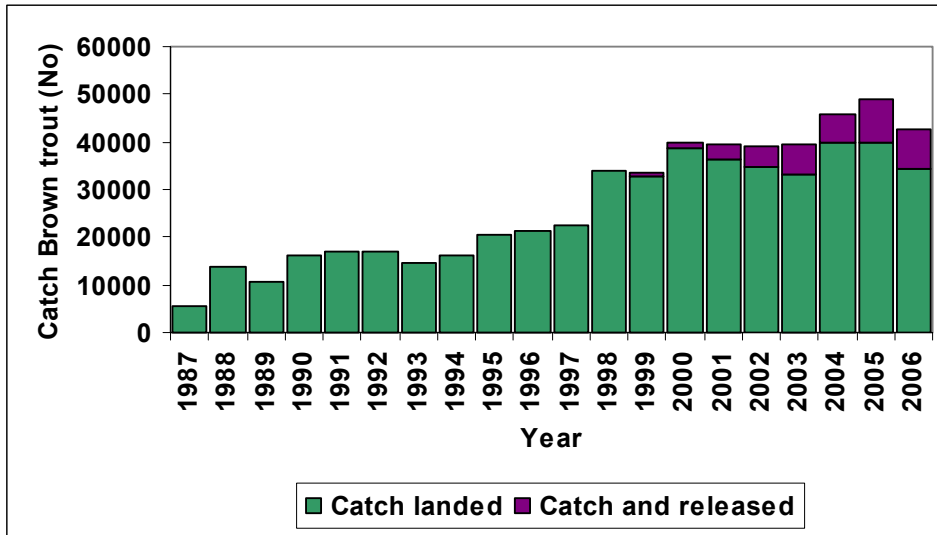


Figure 5. The catch of brown trout in the rod fishery in Iceland 1987-2006, including catch and release.

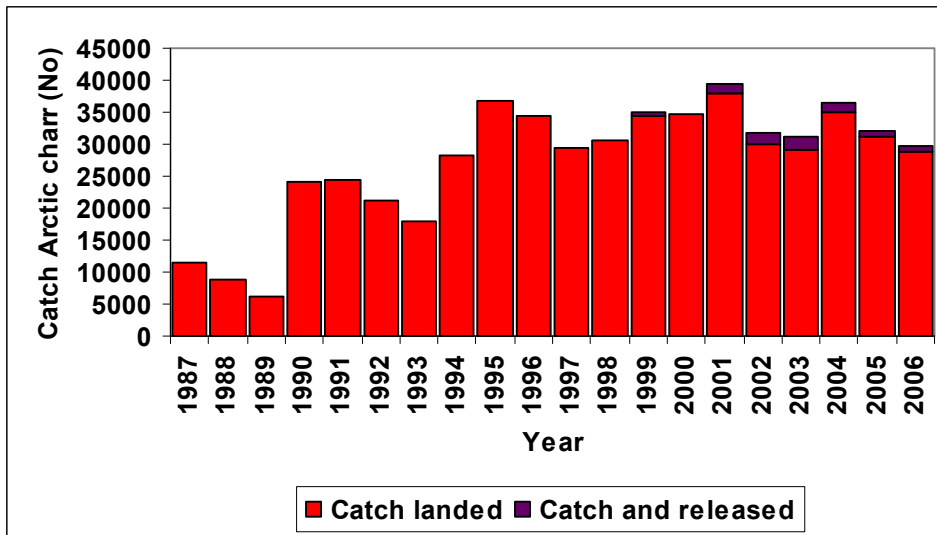


Figure 6. The catch of Arctic charr in the rod fishery in Iceland 1987-2006, including catch and release.

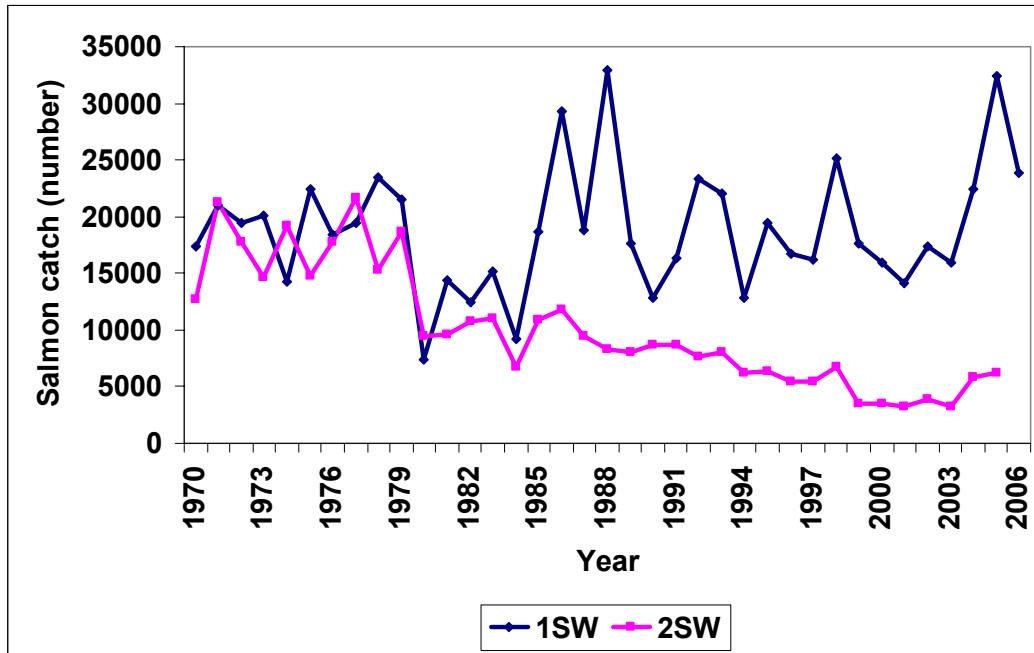


Figure 7. The sea-age composition of Atlantic salmon in rod catches in Icelandic rivers 1970-2006. The estimated number of fish from net lease and of framed origin is shown

Table 1. Salmon catch, rod and line, in Icelandic rivers 2006.

Region	Salmon catch, rod and line											
	Catch	Released	Released	Released	Catch	Catch	Catch	MW	Catch	Catch	MW	Catch
	(number)	(number)	1SW	2SW	landed	landed	1SW	1SW	1SW	2SW	2SW	2SW
Reykjanes	2707	432	419	13	2275	5261	2209	2,24	4959	66	4,58	302
Vesturland	16125	1964	1650	314	14161	34534	13311	2,31	30742	850	4,46	3792
Vestfirðir	1361	140	104	36	1221	3593	983	2,48	2440	238	4,84	1153
Norðurland vestra	6111	1586	1090	496	4525	13747	3431	2,39	8186	1094	5,08	5561
Norðurland eystra	3832	894	356	538	2938	9331	2028	2,34	4752	910	5,03	4579
Austurland	6337	3499	1999	1500	2838	8203	2065	2,12	4384	773	4,94	3819
Suðurland	9072	220	167	53	8852	22075	8217	2,32	19039	635	4,78	3036
<b>Total:</b>	<b>45545</b>	<b>8735</b>	<b>5785</b>	<b>2950</b>	<b>36810</b>	<b>96744</b>	<b>32244</b>	<b>2,31</b>	<b>74502</b>	<b>4566</b>	<b>4,87</b>	<b>22242</b>

Table 2. Salmon catch, nets, in Icelandic river 2006.

Region	Salmon catch, nets						Ranched	
	Catch	Catch	Catch	Catch	Catch	Catch	Catch	
	(number)	landed (kg)	1SW number	1SW (kg)	2SW (number)	2SW (kg)	(number)	landed (kg)
Reykjanes	0	0	0	0	0	0	0	0
Vesturland	75	305	62	185	13	120	0	0
Vestfirðir	19	73	19	73	0	0	0	0
Norðurland vestra	13	57	11	47	2	10	0	0
Norðurland eystra	54	187	45	150	9	37	0	0
Austurland	131	445	100	350	31	95	0	0
Suðurland	5661	15477	4218	13071	1443	2406	0	0
<b>Total:</b>	<b>5953</b>	<b>16544</b>	<b>4455</b>	<b>13876</b>	<b>1498</b>	<b>2668</b>	<b>0</b>	<b>0</b>

Table 3. Total salmon catch in Icelandic rivers 2006, rod, gillnets and ranched.

Region	Salmon catch total (rod, nets and ocean ranched)						Percentage of total	
	Catch	Catch	Catch	Catch	Catch	Catch	Number	Weight
	(number)	landed (kg)	1SW number	1SW (kg)	2SW (number)	2SW (kg)	%	%
Reykjanes	3078	7836	2918	7118	160	718	6,8	6,0
Vesturland	13826	37796	12418	31253	1408	6543	30,6	29,2
Vestfirðir	1349	3678	1223	3075	126	603	3,0	2,8
Norðurland vestra	6935	20906	5855	15531	1080	5375	15,3	16,1
Norðurland eystra	3440	10576	2790	7346	650	3230	7,6	8,2
Austurland	2886	8045	2437	5712	449	2333	6,4	6,2
Suðurland	13696	40747	10788	28500	2908	12247	30,3	31,4
<b>Total:</b>	<b>45210</b>	<b>129584</b>	<b>38429</b>	<b>98535</b>	<b>6781</b>	<b>31049</b>	<b>100</b>	<b>100</b>

Table 4. Catch of brown trout and Arctic charr in rod and line fishery in Icelandic river and lakes in 2006.

Region	Salmon catch total (rod, nets and ocean ranched)						Percentage of total	
	Catch	Catch	Catch	Catch	Catch	Number	Weight	
	(number)	landed (kg)	1SW number	1SW (kg)	2SW (number)			2SW (kg)
Reykjanes	2275	5261	2209	4959	66	302	5,0	4,1
Vesturland	14236	34839	13373	30927	863	3912	31,5	26,9
Vestfirðir	1240	3666	1002	2513	238	1153	2,7	2,8
Norðurland vestra	4538	13804	3442	8233	1096	5571	10,0	10,7
Norðurland eystra	2992	9518	2073	4902	919	4616	6,6	7,3
Austurland	2969	8648	2165	4734	804	3914	6,6	6,7
Suðurland	14513	37552	12435	32110	2078	5442	32,1	29,0
<b>Total:</b>	<b>42763</b>	<b>113288</b>	<b>36699</b>	<b>88378</b>	<b>6064</b>	<b>24910</b>	<b>94,5875</b>	<b>87,4243734</b>

**Table 5.** The salmon catch in Iceland 1974 - 2006 by catch method.  
Percentage of wild salmon in the total catch is shown.

Year	Rod catch	Catch and released	Released (%)	Rod catch retained	Net catch	Catch rod and net	Ocean ranching	Total catch number	Wild salmon (%)
1974	34107			34107	18044	52151	3765	55916	93,3
1975	45882			45882	20402	66284	7720	74004	89,6
1976	39249			39249	17130	56379	3247	59626	94,6
1977	41302			41302	20864	62166	2405	64571	96,3
1978	52679			52679	25946	78625	1953	80578	97,6
1979	43955			43955	18306	62261	1967	64228	96,9
1980	30007			30007	18992	48999	3138	52137	94,0
1981	27777			27777	14478	42255	4626	46881	90,1
1982	24671			24671	11107	35778	5340	41118	87,0
1983	29267			29267	17761	47028	11194	58222	80,8
1984	23582			23582	10912	34494	6595	41089	83,9
1985	31621			31621	14942	46563	19750	66313	70,2
1986	46671			46671	20437	67108	24100	91208	73,6
1987	33907			33907	13960	47867	14140	62007	77,2
1988	47979			47979	18781	66760	64017	130777	51,0
1989	30082			30082	11738	41820	48617	90437	46,2
1990	29443			29443	12339	41782	90726	132508	31,5
1991	31492			31492	10454	41946	133203	175149	23,9
1992	42309			42309	12062	54371	140763	195134	27,9
1993	39025			39025	10197	49222	168427	217649	22,6
1994	28042			28042	11846	39888	89225	129113	30,9
1995	34241			34241	13185	47426	88527	135953	34,9
1996	29436	669	2,3	28767	8668	37435	84365	121800	30,7
1997	28640	1558	5,4	27082	5735	32817	15248	48065	68,3
1998	40286	2826	7,0	37460	5939	43399	11223	54622	79,5
1999	31438	3055	9,7	28383	6657	35040	9648	44688	78,4
2000	27257	2918	10,7	24339	4170	28509	375	28884	98,7
2001	29943	3611	12,1	26332	3043	29375	0	29375	100,0
2002	33767	5985	17,7	27782	4583	32365	0	32365	100,0
2003	34111	5361	15,7	28750	7582	36332	0	36332	100,0
2004	45831	7362	16,1	38469	6742	45211	0	45211	100,0
2005	55168	9224	16,7	45944	7560	53504	0	53504	100,0
2006	45545	8735	19,2	36810	5953	42763	0	42763	100,0
<b>1974 - 2005 Average</b>	<b>35724</b>	<b>4257</b>		<b>34394</b>	<b>12440</b>	<b>46907</b>	<b>31949</b>	<b>78855</b>	<b>59,5</b>

Table 6. Top 10 lists of salmon rivers in 2006 including catch landed and catch and released and for catch landed only.

No	River	Salmon Catch <sup>1</sup>	No	River	Catch landed
1	Ytri-Rangá og Hólsá	4459	1	Ytri-Rangá og Hólsá	4414
2	Selá í Vopnafirði	2726	2	Eystri-Rangá	2915
3	Eystri-Rangá	2471	3	Norðurá	2000
4	Norðurá	2242	4	Þverá og Kjarrá	1968
5	Þverá og Kjarrá	2156	5	Langá	1618
6	Hofsá og Sunnudalsá	2058	6	Blanda og Svartá	1466
7	Langá	1831	7	Laxá í Dölum	1065
8	Blanda og Svartá	1502	8	Selá í Vopnafirði	1040
9	Miðfjarðará	1198	9	Miðfjarðará	926
10	Grímsá og Tunguá	1114	10	Grímsá og Tunguá	888

<sup>1</sup> Includes catch landed and catch and released

Table 7. Top 10 list of river or lakes with brown trout in 2006 including both migratory and stationary fish stocks.

No	River or Lake	Brown trout catch
1	Veiðivötn	8540
2	Fremri Laxá á Ásum	5279
3	Laxá í Mývatnssveit	5279
4	Reykjadalsá og Eyvindarlækur	2438
5	Laxá í Laxárdal	1742
6	Meðalfellsvatn	1525
7	Vatnsdalsá	1164
8	Laxá í Aðaldal	1149
9	Vatnamót	1037
10	Grenlækur	940

Table 8. Top 10 list of river or lakes with Arctic charr in 2006 including both migratory and stationary fish stocks.

No	River or Lake	Arctic charr catch
1	Veiðivötn	8099
2	Arnarv.-Stóra og Austurá	3599
3	Hlíðarvatn	1897
4	Víðidalsá og Fitjá	1460
5	Gufudalsá	1020
6	Skógaá	956
7	Eyjaþjóðará	916
8	Fnjóská	781
9	Brúará	761
10	Norðfjarðará	692



**Table 9.** Number and weight in the rod catch in Reykjanes in 2006. Total catch, catch landed, mean weight, grilse/salmon ratio of Atlantic salmon, brown trout and Arctic charr (MW = mean weight (kg)).

River	Salmon						Grilse (1SW)			Salmon (2SW)			Brown trout			Arctic charr		
	Catch	Released	Catch landed	Weight landed	MW	grilse/salmon	Catch	Landed	Weight Landed	Catch	Landed	MW	Catch	Landed	MW	Catch	Landed	MW
Ellidaár	900	42	858	2005	2,3	885	843	2,3	15	15	4,3	0	0	0,0	0	0	0,0	0,0
Ellidavatn	0	0	0	0	0,0	0	0	0,0	0	0	0,0	146	146	0,5	145	145	0,4	0,5
Úlfarsá (Korpa)	206	26	180	366	2,0	205	179	2,0	1	1	3,5	49	46	1,3	0	0	0,0	0,8
Leirvogsa	299	4	295	655	2,2	284	280	2,1	15	15	4,5	92	92	1,4	0	0	0,0	1,2
Kiðafellsá	11	2	9	21	2,3	11	9	2,3	0	0	0,0	1	1	0,8	0	0	0,0	
Laxá í Kjós	844	224	620	1495	2,4	805	591	2,3	39	29	4,7	259	144	2,3	0	0	0,0	0,0
Bugða	174	127	47	111	2,4	169	45	2,3	5	2	3,8	5	5	0,8	0	0	0,0	0,0
Meðalfellsvatn	19	0	19	40	2,1	19	19	2,1	0	0	0,0	1525	1522	0,3	147	147	0,3	0,3
Brynjudalsá	152	3	149	351	2,4	149	146	2,3	3	3	5,2	32	32	1,1	0	0	0,0	0,7
Botnsá	102	4	98	217	2,2	101	97	2,2	1	1	5,0	19	19	1,9	0	0	0,0	1,7
Djúpavatn *																		
<b>Reykjanes total:</b>	<b>2707</b>	<b>432</b>	<b>2275</b>	<b>5261</b>		<b>33,5</b>	<b>2209</b>	<b>19,9</b>		<b>66</b>	<b>31</b>		<b>2007</b>	<b>10,4</b>		<b>292</b>	<b>0,7</b>	

\* no records

**Table 10.** Number and weight in the rod catch in Vesturland in 2006. Catch, landed, mean weight, grilse/salmon ratio of Atlantic salmon, brown trout and Arctic charr (MW = mean weight (kg)).

River	Salmon					Grilse (1SW)			Salmon (2SW)			Brown trout			Arctic charr		
	Catch	Released	Catch landed	Weight landed	grilse/salmon	Catch	Landed	Weight Landed	Catch	Landed	MW	Catch	Landed	MW	Catch	Landed	MW
Vötn í Svinadal	22	0	22	52	2,4	21	21	2,3	1	1	4,0	152	152	0,9	42	42	0,9
Selós og Þverá	74	0	74	188	2,5	71	71	2,5	3	3	4,0	51	51	1,1	0	0	0,0
Laxá í Leirársveit	675	97	578	1400	2,5	636	547	2,3	39	31	4,5	104	96	1,8	7	6	1,1
Leirá í Leirársveit	12	0	12	30	2,5	12	12	2,5	0	0	0,0	31	18	2,2	0	0	0,0
Hvítá efri hl. og Norð	14	0	14	36	2,6	10	10	2,6	4	4	4,3	6	6	1,0	308	308	0,0
Hvítá í Borg. Neðrihl.	49	0	49	231	2,6	40	40	2,6	9	9	4,3	137	137	1,0	0	0	0,0
Hvítá í Borgarfirði & Gufuá *	491	10	481	1229	2,6	449	441	2,4	42	40	4,5	474	446	1,0	4	4	0,9
Andakílsá	268	18	250	638	2,5	242	227	2,4	26	23	4,0	3	3	0,6	49	49	0,7
Grímsá og Tunguá	1114	226	888	2132	2,4	1072	859	2,4	42	29	4,6	171	168	1,4	1	0	0,0
Flókadalsá	437	4	433	978	2,3	425	422	2,2	12	11	3,9	5	5	1,2	0	0	0,0
Reykjadalsá	107	0	107	299	2,8	96	96	2,6	11	11	4,1	16	16	1,5	2	2	1,5
Þverá og Kjarrá	2156	188	1968	5287	2,7	1914	1762	2,4	242	206	4,7	180	180	1,4	5	5	1,5
Norðurá	2242	242	2000	4524	2,3	2116	1914	2,2	126	86	4,5	55	52	1,4	5	4	1,1
Norðlingafjót	799	92	707	1697	2,4	783	693	2,4	16	14	4,0	13	13	1,1	6	6	0,5
Gljúfurá	185	5	180	372	2,1	181	176	2,0	4	4	3,9	30	29	1,1	0	0	0,0
Langá	1831	213	1618	3570	2,2	1800	1593	2,2	31	25	4,2	3	3	1,5	18	17	1,1
Urriðaa	101	0	101	237	2,3	96	96	2,2	5	5	4,3	81	77	0,9	4	4	1,5
Álftá og Veita	195	0	195	518	2,7	170	170	2,5	25	25	4,0	189	189	1,4	5	5	1,4
Hítará	543	33	510	1261	2,4	518	486	2,3	25	24	4,5	27	25	1,4	23	23	1,3
Halffjarðará	1077	749	328	834	2,9	874	307	2,5	203	21	4,9	58	26	1,2	45	34	1,4
Núpá í Eyjahreppi	15	0	15	49	3,3	7	7	2,4	8	8	4,0	9	9	1,3	7	7	1,7
Laxá í Miklaholtshr.	59	0	59	158	2,7	51	51	2,4	8	8	4,3	48	48	0,8	6	6	1,0
Straumfjarðará	502	19	483	1247	2,6	468	454	2,5	34	29	4,5	57	57	1,2	12	12	1,0
Vatnasvæði Lysu	17	0	17	86	5,1	3	3	2,3	14	14	5,7	55	54	0,6	38	38	0,4
Staðará *																	
Bakká	15	0	15	40	2,6	14	14	2,5	1	1	4,0	95	95	1,0	55	55	0,7
Grishólsá	11	0	11	23	2,1	11	11	2,1	0	0	0,0	52	52	0,7	30	30	0,6
Örlygsstaðaá-Kársst.	17	0	17	44	2,6	15	15	2,5	2	2	3,5	5	5	1,3	8	8	0,7
Fröðá	63	15	48	100	2,1	62	47	2,1	1	1	4,5	2	2	1,2	24	21	0,7
Valshamarsá	12	0	12	23	1,9	12	12	1,9	0	0	0,0	16	16	0,7	0	0	0,0
Setbergasá	21	0	21	47	2,2	21	21	2,2	0	0	0,0	1	1	0,3	0	0	0,0
Stóra-Langadalsá	0	0	0	0	0,0	0	0	0,0	0	0	0,0	24	20	1,5	0	0	0,0
Laxá á Skógarströnd	92	0	92	193	2,1	92	92	2,1	0	0	0,0	6	6	0,9	0	0	0,0
Svínafossá *			0														
Dunká	109	1	108	242	2,2	105	104	2,2	4	4	4,6	0	0	0,0	1	1	0,8
Hörðudalsá	14	0	14	32	2,3	13	13	2,2	1	1	3,5	0	0	0,0	11	11	1,0
Skrauma *																	
Miðá og Tunguá	218	0	218	524	2,4	204	204	2,3	14	14	4,5	0	0	0,0	120	119	0,7
Haukadalsá neðri	498	8	490	1247	2,5	436	428	2,3	62	62	4,5	0	0	0,0	20	19	0,6
Haukadalsá efri	24	1	23	55	2,4	21	20	2,1	3	3	4,7	0	0	0,0	135	134	0,8
Laxá í Dölum	1076	11	1065	2737	2,6	993	986	2,4	83	79	4,7	0	0	0,0	0	0	0,0
Ljá	4	0	4	9	2,2	4	4	2,2	0	0	0,0	13	13	0,8	6	6	0,6
Ljárskógarvötn	0	0	0	0	0,0	0	0	0,0	0	0	0,0	75	75	1,0	0	0	0,0
Fáskrúð	178	2	176	446	2,5	161	159	2,3	17	17	4,7	0	0	0,0	0	0	0,0
Glerá *			0														
Laxá í Hvammssveit	75	1	74	179	2,4	68	67	2,3	7	7	3,9	0	0	0,0	1	1	0,0
Flekkudalsá	217	17	200	456	2,3	204	191	2,2	13	9	4,2	5	5	0,9	4	4	0,6
Krossá	196	0	196	389	2,0	195	195	2,0	1	1	3,7	23	23	0,6	44	44	0,6
Búðardalsá	300	12	288	695	2,5	275	270	2,3	25	18	4,2	4	4	1,0	2	2	0,7
Staðarhólsá og Hvolsá*			0														
<b>Vesturland total:</b>	<b>16125</b>	<b>1964</b>	<b>14161</b>	<b>34534</b>	<b>2,1</b>	<b>14961</b>	<b>13311</b>		<b>1164</b>	<b>850</b>		<b>2276</b>	<b>2177</b>		<b>1048</b>	<b>1027</b>	

\* No records

& Hvítá í Borgarfirði, Brema, Svarthöfði, Straumar, Skuggi, Ferjukot-Norðurkot.

**Table 11.** Number and weight in the rod catch in Vestfirðir 2006. Catch, landed, mean weight, grilse/salmon ratio of Atlantic salmon, brown trout and Arctic charr (MW = mean weight (kg)).

River	Salmon					Grilse (1SW)			Salmon (2SW)			Brown trout			Arctic charr		
	Catch	Released	Catch landed	Weight landed	grilse/salmon	Catch	Landed	Weight Landed	Catch	Landed	MW	Catch	Landed	MW	Catch	Landed	MW
Gufudalsá	14	0	14	32	2,3	14	14	2,3	0	0	0,0	3	3	0,8	1020	1009	0,6
Þorskafjarðará	12	0	12	37	3,1	10	10	2,5	2	2	4,0	1	1	2,0	81	77	0,6
Fjarðarhornská	115	0	115	310	2,7	92	92	2,2	23	23	4,6	3	3	0,4	273	273	0,5
Skálmardalsá	0	0	0	0		0	0	0,0	0	0	0,0	0	0	0,0	416	371	0,7
Mórudalsá *			0														
Suðurfossá *																	
Botnsá *																	
Heydalsá *																	
Langadalsá	329	39	290	790	2,8	257	232	2,2	72	58	4,8	0	0	0,0	1	1	1,0
Ísafjarðará	30	0	30	83	2,7	25	25	2,4	5	5	4,4	0	0	0,0	2	2	1,1
Laugardalsá	299	0	299	987	3,0	250	250	2,7	49	49	5,0	0	0	0,0	0	0	0,0
Laugarbólsvatn *																	
Hvannadalsá	145	20	125	438	3,4	97	81	2,5	48	44	5,2	0	0	0,0	4	4	1,4
Selá í Skjaldfannardal	4	0	4	12	3,0	4	4	3,0	0	0	0,0	0	0	0,0	25	25	1,0
Þjarnarfjarðará*			0														
Selá í Steingrímsf.	34	0	34	110	3,2	24	24	2,6	10	10	4,8	0	0	0,0	81	81	0,9
Staðará í Steing. *																	
Miðdalsá *																	
Víðidalsá í Steingr.	62	0	62	160	2,8	48	48	2,2	14	14	4,4	1	1	1,0	0	0	0,0
Hrófá	54	0	54	148	2,7	43	43	2,2	11	11	4,8	0	0	0,0	17	17	0,9
Prestbakkaá	42	10	32	82	2,6	39	29	2,4	3	3	4,2	1	1	0,3	0	0	0,0
Krossá	111	0	111	306	2,8	93	93	2,4	18	18	4,4	1	1	1,0	0	0	0,0
Vikurá	98	71	27	68	3,0	80	27	2,6	18	0	4,8	0	0	0,0	0	0	0,0
Laxá í Hrútafirði	12	0	12	30	2,5	11	11	2,4	1	1	4,0	0	0	0,0	0	0	0,0
<b>Vestfirðir total:</b>	<b>1361</b>	<b>140</b>	<b>1221</b>	<b>3593</b>	<b>2,9</b>	<b>1087</b>	<b>983</b>		<b>274</b>	<b>238</b>		<b>10</b>	<b>10</b>		<b>1920</b>	<b>1860</b>	

\* No records.

**Table 12.** Number and weight in the rod catch in Nordurland vestra 2006. Catch, landed, mean weight, grilse/salmon ratio of Atlantic salmon, brown trout and Arctic charr (MW = mean weight (kg)).

River	Salmon					Grilse (ISW)			Salmon (2SW)			Brown trout			Arctic charr		
	Catch	Released	Catch landed	Weight landed	grilse/salmon	Catch	Landed	Weight Landed	Catch	Landed	MW	Catch	Landed	MW	Catch	Landed	MW
Hrútafjarðará og Siká	339	18	321	887	2,8	284	271	2,3	55	50	5,3	5	5	1,2	159	159	1,3
Tjarnará	50	0	50	123	2,5	43	43	2,1	7	7	4,6	0	0	0,0	210	210	0,4
Hamarsá	17	2	15	51	3,4	14	12	2,1	3	3	4,0	2	2	0,5	55	55	0,4
Miðfjarðará	1198	272	926	2621	2,9	975	765	2,4	223	161	5,0	26	26	1,3	216	215	1,0
Amarv.-Stóra og Austurá			0									867	853	1,0	3599	3482	0,8
Viðisdalsá og Fitjá	682	23	659	2204	3,4	477	464	2,2	205	195	5,3	166	165	1,3	1460	1440	1,2
Vatnsdalsá Laxasv.	936	893	43	159	3,9	584	27	2,8	352	16	5,6	403	391	1,5	277	272	1,1
Vatnsdalsá Silungasv.	84	1	83	242	2,9	69	68	2,5	15	15	4,9	1164	1134	1,0	447	429	0,9
Giljá %			0														
Gljúfurá	99	7	92	296	3,3	76	72	2,6	23	20	5,6	25	25	1,1	58	58	1,0
Laxá á Ásum	365	92	273	682	2,5	335	252	2,3	30	21	4,8	2	2	0,7	0	0	0,0
Fremri Laxá á Ásum	20	0	20	53	2,6	18	18	2,4	2	2	4,5	5279	4868	0,4	3	3	1,0
Blanda	1199	24	1175	3982	3,4	735	721	2,4	464	454	5,0	37	37	1,7	151	135	1,1
Svartá	303	12	291	784	2,7	249	241	2,3	54	50	4,8	31	31	1,4	13	13	1,2
Langavatn á Refas.*			0														
Seyðisá *			0														
Blöndulón *			0														
Laxá á Refasveit	242	8	234	679	2,9	199	191	2,4	43	43	5,0	10	10	1,2	0	0	0,0
Hallá *			0														
Laxá í Nesjum	24	0	24	60	2,5	21	21	2,3	3	3	4,0	0	0	0,0	0	0	0,0
Fossá á Skaga	28	0	28	84	3,0	25	25	2,7	3	3	5,7	0	0	0,0	8	8	1,0
Laxá á Skaga	24	11	13	36	3,3	13	9	2,3	11	4	4,6	37	37	1,4	69	68	1,4
Húseyjarkvísl	150	94	56	160	3,2	113	46	2,6	37	10	5,7	397	237	1,5	27	7	1,0
Sæmundará	216	56	160	449	2,8	187	138	2,5	29	22	4,3	66	65	1,4	159	135	1,4
Norðurá í Skagafirði *			0														
Héraðsvötn *			0														
Hjaltadalsá og I *			0														
Hofsá, Unadals *			0														
Grafará *			0														
Hrollleifsdalsá	16	0	16	44	2,7	13	13	2,2	3	3	4,8	326	298	0,7	166	160	0,6
Flókadalsá og vötn	33	2	31	101	3,2	25	23	2,7	8	8	4,8	311	309	0,7	499	497	0,7
Fljótaá	86	71	15	50	3,3	66	11	2,7	20	4	5,3	0	0	0,0	357	346	1,1
<b>Norðurland vestra tota</b>	<b>6111</b>	<b>1586</b>	<b>4525</b>	<b>13747</b>		<b>4521</b>	<b>3431</b>		<b>1590</b>	<b>1094</b>		<b>9154</b>	<b>8495</b>		<b>7933</b>	<b>7692</b>	

\* No records

% Recorded with River Vatnsdalsá

**Table 13.** Number and weight in the rod catch in Nordurland eystra 2006. Catch, landed, mean weight, grilse/salmon ratio of Atlantic salmon, brown trout and Arctic charr (MW = mean weight (kg)).

River	Salmon					Grilse (1SW)			Salmon (2SW)			Brown trout			Arctic charr		
	Catch	Released	Catch landed	Weight landed	grilse/salmon	Catch	Landed	Weight Landed	Catch	Landed	MW	Catch	Landed	MW	Catch	Landed	MW
Olafsfiarðará *																	
Svarfaðardalsá	3	0	3	70	2,3	3	3	2,3	0	0	0,0	65	64	0,9	567	530	0,9
Þorvaldsdalsá *																	
Hörgá	2	0	2	6	3,0	2	2	3,0	0	0	0	25	25	1,0	670	670	1,0
Eyjafjarðará	5	0	5	16	3,1	3	3	2,7	2	2	3,7	232	220	1,4	916	874	1,2
Fnióská	383	23	360	1277	3,5	226	210	2,4	157	150	5,1	49	47	1,6	781	776	1,2
Bakkaá í Fnióskadal												18	18	1,3	78	78	1,1
Djúpá	89	0	89	239	2,7	78	78	2,4	11	11	4,6	2	2	2,5	0	0	0,0
Skjálfandaflljót	675	1	674	1838	2,7	575	575	2,3	100	99	5,0	69	69	0,9	218	218	0,5
Laxá í Aðaldal	825	565	260	942	4,6	372	165	2,7	453	95	6,1	1149	677	1,1	8	7	1,0
Laxá í Laxárdal												1742	1091	1,4	1	1	0,5
Laxá í Mývatnssveit												5063	2947	1,5	4	2	1,5
Laxá í Mýv. Haganes												407	374	1,2	9	9	1,1
Arnarvatnsá og Helluvaðsá												502	72	1,1	2	1	1,5
Kraka *																	
Reykjadalsá	102	70	32	95	2,8	45	23	2,8	57	9	5,2	2438	899	0,7	43	38	0,8
Mýrarkvísl	306	6	300	966	3,2	204	200	2,4	102	100	4,8	4	4	1,6	0	0	0,0
Litlaá	1	1	0	0	0,0	1	0	0,0	0	0	0,0	393	229	1,4	31	18	1,9
Skjálftavatn *			0														
Brunná	0	0	0	0	0,0	0	0	0,0	0	0	0,0	46	25	1,8	198	198	1,4
Deildará	135	0	135	419	3,1	89	89	2,3	46	46	5,0						
Ormarsá	187	24	163	543	3,5	107	104	2,5	80	59	4,9	56	54	1,4	60	60	1,1
Svalbarðsá	283	62	221	683	3,1	187	148	2,2	96	73	5,0	16	16	1,6	4	4	1,2
Sandá	268	75	193	650	3,6	158	124	2,5	110	69	5,2	0	0	0,0	1	1	1,3
Hafralónsá	424	65	359	1150	3,3	242	212	2,2	182	147	4,8	16	15	1,3	35	35	1,5
Kverká	9	1	8	26	2,9	5	5	1,9	4	3	4,2	0	0	0,0	1	1	2,0
Hölná	135	1	134	411	3,1	87	87	2,2	48	47	4,7	3	3	1,2	1	1	1,5
Bakkaá( Sandvík) *			0														
Lónsá og Sauðanesá	0	0	0	0	0,0	0	0	0,0	0	0		141	114	1,0	110	105	1,2
<b>Norðurland eystra tot:</b>	<b>3832</b>	<b>894</b>	<b>2938</b>	<b>9331</b>	<b>2,4</b>	<b>2384</b>	<b>2028</b>		<b>1448</b>	<b>910</b>		<b>12436</b>	<b>6965</b>		<b>3738</b>	<b>3627</b>	

\* no records

**Table 14.** Number and weight in the rod catch in Austurland 2006. Catch, landed, mean weight, grilse/salmon ratio of Atlantic salmon, brown trout and Arctic charr (MW = mean weight (kg)).

River	Salmon					Grilse (1SW)			Salmon (2SW)			Brown trout			Arctic charr		
	Catch	Released	Catch landed	Weight landed	grilse/salmon	Catch	Landed	Weight Landed	Catch	Landed	MW	Catch	Landed	MW	Catch	Landed	MW
Miðfjarða og Kverká	155	6	149	432	2,9	109	108	2,1	46	41	4,9	3	3	1,7	1	1	0,5
Selá í Vopnafirði	2726	1686	1040	3204	3,3	1627	694	2,2	1099	346	5,0	4	4	0,8	18	14	1,1
Vesturdalsá	104	44	60	143	2,7	78	52	2,1	26	8	4,8	2	2	0,9	223	223	0,7
Hofsá	1991	1318	673	1979	3,6	1141	481	2,3	850	192	5,3	75	74	1,2	154	154	0,8
Sunnudalsá	67	52	15	47	3,0	49	12	2,4	18	3	4,8	0	0	0,0	0	0	0,0
Gilsá og Selfljót	45	0	45	121	2,7	36	36	2,2	9	9	4,9	133	132	0,8	347	346	0,8
Kelduá *																	
Fjarðará, Borgarf.	43	0	43	105	2,5	35	35	2,3	8	8	3,9	1	1	0,5	66	66	0,9
Fjarðará, Seyðisfirði	18	0	18	46	2,6	15	15	2,3	3	3	5,0	0	0	0,0	156	151	1,0
Norðfjarðará	9	0	9	25	2,7	7	7	2,4	2	2	4,0	0	0	0,0	692	661	0,9
Fjarðará, Loðmundarf.	16	6	10	26	2,9	12	8	2,2	4	2	5,1	5	4	1,1	132	74	0,9
Sléttuá í Reyðarfirði	1	0	1	4	3,5	0	0	0,0	1	1	3,5	0	0	0,0	90	90	0,5
Breiðdalsá	937	335	602	1660	2,7	747	460	2,2	190	142	4,9	517	492	0,8	405	327	0,9
Selá í Álftafirði	133	43	90	207	2,3	127	84	2,2	6	6	3,8	8	8	1,6	3	3	0,9
Geithellnaá *			0														
Hoffellsá *			0														
Laxá í Nesjum	92	9	83	204	2,4	81	73	2,2	11	10	4,4	73	60	0,8	3	3	0,4
<b>Austurland samtals:</b>	<b>6337</b>	<b>3499</b>	<b>2838</b>	<b>8203</b>	<b>2,9</b>	<b>4064</b>	<b>2065</b>		<b>2273</b>	<b>773</b>		<b>821</b>	<b>780</b>		<b>2290</b>	<b>2113</b>	

\* no records

**Table 15.** Number and weight in the rod catch in Sudurland 2006. Total catch, catch landed, mean weight, grilse/salmon ratio of Atlantic salmon, brown trout and Arctic charr (MW = mean weight kg).

River	Salmon					Grilse (1SW)			Salmon (2SW)			Brown trout			Arctic charr		
	Catch	Released	Catch landed	Weight landed	grilse/salmon	Catch	Landed	Weight Landed	Catch	Landed	MW	Catch	Landed	MW	Catch	Landed	MW
Brunná *			0														
Laxá, Brúará, Djúpá	10	0	10	32	3,2	7	7	2,7	3	3	4,4	190	190	2,3	7	7	1,1
Eldvatn á Brunas *			0														
Fossálar			0									82	81	2,4	13	13	0,9
Vatnamót	0	0	0	0	0,0	0	0	0,0	0	0	0,0	1037	370	2,2	12	8	1,0
Hólmasvæði	1	0	1	3	2,5	1	1	2,5	0	0	0,0	52	52	2,9	0	0	0,0
Geirlandsá	23	1	22	52	2,4	19	18	2,1	4	4	3,7	187	175	2,5	8	8	1,1
Skaftá *			0														
Hörgsá á Siðu *			0														
Fjaðrá *			0														
Vikurflóð *			0														
Hæðargarðsvatn *			0														
Holtásá *			0														
Tungulækur	4	1	3	11	3,4	3	2	2,9	1	1	5,0	557	353	2,6	1	1	1,0
Grenlækur	0	0	0	0	0,0	0	0	0,0	0	0	0,0	940	705	1,9	145	91	1,7
Steinsmýrarvötn	1	0	1	5	5,0	0	0	0,0	1	1	5,0	489	430	1,2	94	90	1,1
Eldvatn í Meðallandi	7	0	7	20	2,9	6	6	2,7	1	1	3,5	172	146	2,1	67	63	1,3
Tungufljót	8	0	8	18	2,3	8	8	2,3	0	0	0,0	324	279	3,1	23	19	1,3
Kúðafljót *																	
Skálm *			0														
Vatnsá og Kerlingadalsá *			0														
Heiðarvatn *																	
Skógaá	344	7	337	868	2,6	308	301	2,3	36	36	4,7	35	34	1,2	956	947	1,2
Markarfljót, Alai *			0														
Affall, A-Landeyjum *			0														
Ytri-Rangá	2953	38	2915	6721	2,3	2870	2840	2,2	83	75	4,6	0	0	0,0	1	1	0,3
Ytri-Rangá efsta sv	157	1	156	332	2,1	149	148	2,0	8	8	4,2	0	0	0,0	0	0	0,0
Hólsá Vesturbakki	1187	6	1181	2711	2,3	1165	1159	2,2	22	22	4,9	99	92	1,9	4	4	1,6
Eystri-Rangá	2471	40	2431	6145	2,5	2295	2265	2,4	176	166	4,9	62	56	2,1	14	13	1,8
Þverá *			0														
Hólsá Austurbakki	162	0	162	411	2,5	151	151	2,4	11	11	4,9	237	237	2,2	1	1	1,6
Hróarslækur *			0														
Minnvallarlækur	1	0	1	2	3,2	1	1	2,2	0	0	0,0	359	56	2,0			
Galtalækur *			0														
Kálfa	93	20	73	203	2,7	83	63	2,4	10	10	5,3	40	40	1,3	4	3	1,4
Fossá, Rauða *																	
Kaldakvisl												13	11	1,6	160	115	1,8
Kvislaveitur												173	173	1,6	0	0	0,0
Botnsvatn *																	
Fellsendavatn												217	202	1,5	0	0	0,0
Þórisvatn												161	161	1,0	0	0	0,0
Veðivötn												8540	8540	1,1	8099	8099	0,5
Þjorsá	35	1	34	91	2,7	30	29	2,3	5	5	4,8	110	86	1,4	11	10	1,3
Apá *																	
Apavatn *																	
Ólfusá	138	0	138	383	2,8	119	119	2,4	19	19	4,7	246	246	0,7	6	6	0,9
Hvítá	361	2	359	1026	2,9	300	298	2,5	61	61	4,6	256	255	1,2	53	53	1,2
Brúará	27	0	27	83	3,1	20	20	2,6	7	7	4,6	54	52	1,2	761	728	1,0
Litla-Laxá *			0														
Stóra-Laxá	709	54	655	2031	3,1	528	498	2,5	181	157	4,9	59	57	1,3	14	12	1,5
Tungufljót *			0														
Sog	345	48	297	832	2,8	295	257	2,5	50	40	4,7	63	62	1,3	102	99	1,8
Asgarðslækur	0	0	0	0	0,0	0	0	0,0	0	0	0,0	0	0	0,0	0	0	0,0
Varmá/Þorleifslækur	1	1	0	0	0,0	0	0	0,0	1	0	0,0	201	109	2,4	17	10	2,2
Hróarsholtslækur	34	0	34	95	2,8	26	26	2,5	8	8	3,9	914	816	1,2	13	13	0,8
Hlíðarvatn	0	0	0	0	0,0	0	0	0,0	0	0	0,0	0	0	0,0	1897	1833	0,6
<b>Suðurland total:</b>	<b>9072</b>	<b>220</b>	<b>8852</b>	<b>22075</b>	<b>2,4</b>	<b>8384</b>	<b>8217</b>		<b>688</b>	<b>635</b>		<b>15869</b>	<b>14066</b>	<b>51,4</b>	<b>12483</b>	<b>12247</b>	<b>32</b>

\* no records

Table 16. Salmon catch in most Icelandic Rivers 1974-2006.

River	Y E A R																										Average catch	Max catch	Min catch								
	1974	1975	1976	1977	1978	1979	1980	1981	1982	1983	1984	1985	1986	1987	1988	1989	1990	1991	1992	1993	1994	1995	1996	1997	1998	1999				2000	2001	2002	2003	2004	2005	2006	
Elliðaár	2033	2071	1692	1328	1383	1336	938	1074	1219	1508	1331	1157	1083	1175	2006	1773	1384	1127	1393	1390	1132	1088	1211	568	492	424	592	414	478	472	645	954	900	1152	2071	414	
Úlfarsá (Korpa)	357	438	406	361	327	215	110	166	158	450	225	303	376	245	709	440	306	238	517	457	338	316	339	217	248	162	223	185	215	273	244	207	206	305	709	110	
Leirvogssá	332	739	544	474	463	386	136	213	322	514	320	438	324	291	1057	458	489	435	556	428	490	520	552	411	540	467	487	434	529	558	812	744	299	483	1057	136	
Laxá í Kjós	1270	1901	1973	1677	1648	1508	950	1290	927	1545	1273	871	1043	933	3422	1819	1370	1328	1053	1103	683	866	629	985	1192	1171	940	916	1483	1457	1305	1312	844	1308	3422	629	
Bugða	158	269	410	263	136	125	212	260	232	450	461	283	201	230	389	314	226	265	191	163	100	154	143	162	173	126	132	90	156	200	204	276	174	224	461	90	
Brynjudalsá	205	271	185	173	98	100	11	24	120	177	68	29	44	59	287	118	385	235	154	118	88	597	186	76	102	120	136	95	109	77	171	163	152	149	597	11	
Botnsá	247	194	158	146	171	242	121	77	92	100	70	54	117	33	209	80	105	148	97	61	58	127	65	20	92	73	124	94	139	123	120	116	102	114	247	20	
Laxá í Leirásveit	1116	1654	1288	1154	1252	899	707	670	545	708	742	860	1610	914	1887	1186	1052	850	652	747	853	1425	1368	697	816	1065	925	948	1102	1133	972	1294	675	1034	1887	545	
Andakilsá	235	331	262	187	237	138	69	104	89	108	106	101	145	136	203	122	97	134	85	109	125	118	154	184	63	177	79	95	94	245	129	233	268	147	331	63	
Hvítá	393	521	388	401	788	573	555	364	348	213	326	597	469	514	439	301	263	572	520	622	560	407	502	213	692	504	425	571	560	918	509	631	554	491	918	213	
Grímsá og Tunguá	1419	2116	1439	1103	1952	1527	869	845	717	1382	1061	1463	1836	825	1963	1200	756	1294	1864	1228	1485	1123	1484	1613	1705	1872	1048	1005	1116	1156	1085	1486	1114	1345	2116	717	
Flokadalsá	411	613	432	263	547	377	266	181	234	281	303	351	384	282	293	182	241	350	322	387	341	288	233	319	360	347	380	362	473	334	523	410	437	346	613	181	
Reykjadalssá	156	275	185	112	120	105	56	80	100	91	58	42	69	42	33	75	77	157	107	40	25	97	36	94	95	73	72	33	80	156	183	205	107	98	275	25	
Þverá og Kjarrá	1748	2690	2330	2368	3132	3558	1938	1245	1616	1901	1082	1550	2127	1703	1567	1327	1485	1979	2314	1554	1605	1638	1381	1633	2181	2136	1281	1210	1444	1872	1373	4165	2156	1910	4165	1082	
Norura	1428	2132	1675	1470	2089	1995	1583	1185	1455	1643	856	1121	1523	1034	1359	867	1070	1267	1965	2117	1625	1697	1964	1899	2001	1676	1650	1337	2217	1444	1382	3138	2242	1621	3138	856	
Gjúfurá	150	522	356	400	461	286	130	101	184	225	110	138	280	73	181	133	97	171	286	192	150	356	209	240	152	134	104	99	167	88	166	255	185	206	522	73	
Langá	1379	2131	1568	1720	2405	1893	1049	735	1090	960	610	1155	1765	1023	1409	748	1000	951	1290	777	978	1400	1517	1366	1560	1641	1011	1407	1605	2263	2232	1912	1831	1392	2405	610	
Urriðá				84	112	202	102	65	151	162	142	103	55	16	105	63	34	13	19	54	15	37	47	29	42	62	22	24	40	80	53	115	101	71	202	13	
Álfhá	154	341	204	300	386	255	265	267	396	485	268	333	399	202	443	283	245	274	333	242	247	263	286	191	275	132	187	228	278	299	343	195	283	485	132		
Hítará	383	525	351	346	649	314	167	252	202	201	151	203	506	273	428	225	257	393	255	279	206	424	355	217	311	443	404	418	493	448	611	706	543	356	706	151	
Halffjarðará	613	559	595	624	950	701	494	465	562	625	549	562	1131	521	875	661	599	711	818	617	672	735	602	560	752	793	672	532	943	1007	1133	1290	1077	716	1290	465	
Straumfjarðará	451	755	433	466	648	391	320	437	350	360	215	327	378	161	334	300	267	308	233	260	253	315	269	226	297	260	198	191	342	379	475	671	502	352	755	161	
Vatnsholtssós og vötn				290	325	112	175	140	171	135	200	143		183	126	101	88	107	108	68	63	69	88	25	97	59	105	208	17	126	325	17	126	325	17		
Fróðá		182	199	254	225	234	130	94	75	100				58	61	71	51	50	51	52	105	29	26	13	13		29	23	23	15	23	41	63	82	254	13	
Grisholtssá og Bakká	60	55	75	70	125	61	24	48	37	64	60	27	38																								
Setbergssá				244	167	81	192	170	173	147	215	233	100	296	134	203	117	120	76	40	0	80	44	63	44	39	7	16	47	34	32	21	111	296	0		
Laxá á Skógarströnd	99	167	114	190	179	177	109	183	121	201	189	277	218	117	242	103	106	101	72	68	33	41	94	46	121	98	75	81	63	169	84	170	92	128	277	33	
Dunká				83	76	142	58	138	85	129	52	135	124	68	126	71	96	104	125	103	50	76	150	62	39	47	45	96	88	169	103	162	109	97	169	39	
Skrauma	6	10		22	23	18	10				32	16	16	23				0	3	6	10	4	0	16	0	0								11	32	0	
Hörudalsá	74	55	55	51			51	55	27	87	50	79	43	18	116	78	62	77	68																		
Miðá og Tunguá	117	245	121	146	135	203	85	182	132	161	128	46	101	35	200	118	90	88	214	112	42	58	48	31	103	93	40	80	60	159	76	258	218	119	258	31	
Haukadalsá	810	914	904	862	926	643	408	814	598	886	633	499	817	650	1232	511	540	703	776	632	407	394	626	331	916	646	348	577	426	640	455	710	522	664	1232	331	
Laxá í Dölum	341	547	488	419	533	630	324	671	650	947	903	1600	1907	1408	2385	1006	1049	1227	1124	929	625	764	1032	764	1432	938	607	877	879	1394	1533	1881	1076	994	2385	324	
Fáskrúð	202	298	136	242	226	261	140	190	154	214	165	257	449	381	464	203	226	183	330	212	96	157	187	144	265	145	143	221	170	182	194	283	178	223	464	96	
Flekkudalsá	300	462	343	342	467	509	293	255	237	249	189	133	244	129	360	140	145	241	262	247	100	109	192	148	226	131	108	131	229	284	227	290	217	241	509	100	
Krossá á Skarðsströnd	106	120	109	81	106	156	115	157	126	203	93	27	117	51	208	99	30	100	125	114	44	100	72	28	50	71	33	52	134	95	208	187	196	104	208	27	
Búbardalsá	35			100	120	131	71	54	71	32	51	55	56	111	81	106	146	131	56	41	31	45	59	42	43	45	105	158	245	335	341	300	100	341	31		
Hvolsá og Staðarhólsá	126	136	185	163	180	90	18	140	111	100	144	137	323	101	768	163	331	327	306	274	243	313	83	25	61	18	26	46	27	41	78	73	161	768	18		
Fjarðarhómsá				8	0	38	8	18	34	60	31			29	12	16	4	8	33	24	12	4	2	2	0												
Laugardalsá í Ísafj. djú. ísafjarðará	309	601	245	681	703	596	276	288	250	181	125	421	386	190	501	280	161	284	220	265	157	223	111	135	343	149	156	257	309	324	591	390	299	316	703	111	
Ísafjarðará	10	27	52	29	25	12	12	9			5	6	14	3	23	16	14	55	15	12	3	8	5	4	13	4	4	7	8	14	22	35	30	16	55	3	

Table 16. continued.

River	Y E A R																										Average catch	Max catch	Min catch									
	1974	1975	1976	1977	1978	1979	1980	1981	1982	1983	1984	1985	1986	1987	1988	1989	1990	1991	1992	1993	1994	1995	1996	1997	1998	1999				2000	2001	2002	2003	2004	2005	2006		
Hrútafjarðará og Síká	194	291	228	262	346	312	253	288	220	287	195	345	536	259	532	252	200	359	459	411	176	288	205	201	243	218	141	126	168	164	631	514	339	291	631	126		
Mjólfjarðará	837	1414	1601	2581	2337	2132	1714	1213	926	882	583	1059	1719	1073	2081	1175	774	1112	1401	1023	668	1032	714	602	1772	1203	612	433	749	577	2228	1561	1198	1243	2581	433		
Tjarnará á Vatnsnesi			34		112	82	53	56	36	53	23	55	25	0		40	18	51	23	40	9	30	0	37	61	32	10	6	39	36	53	52	50	38		112	0	
Víðisdalsá og Fitjá	1051	1140	1238	1792	1851	1948	1423	1392	1132	1082	625	713	1541	1563	2023	924	604	667	1473	1342	580	981	783	691	1081	1089	644	581	887	588	1745	1732	682	1153	2023	580		
Vatnsdalsá	706	832	571	1203	1466	1413	1033	985	721	879	699	856	1582	1496	1243	660	604	683	998	853	516	601	723	769	1149	629	323	584	850	547	964	1252	1020	887	1582	323		
Laxá á Asum	1439	1881	1270	1439	1854	1650	956	1413	1036	1050	625	1440	1857	1157	1617	749	651	833	861	1458	805	1549	627	715	1136	430	770	562	559	308	462	679	365	1057	1881	308		
Blanda	1173	2363	1485	1367	2147	906	778	1412	861	511	495	766	1814	1243	1217	375	607	568	432	404	357	519	600	877	1984	1191	706	1086	833	504	1386	1591	1199	1017	2363	357		
Svartá	420	232	96	46	295	469	444	125	73	147	132	330	391	462	275	118	105	108	363	495	400	547	244	532	619	213	170	283	260	276	398	221	303	290	619	46		
Laxá á Refasveit	79	58	41	71	94	146	153	71	39	57	70	111	144	132	140	96	156	117	297	227	144	143	104	139	179	105	69	88	169	82	154	254	242	126	297	39		
Hallá				171	185	197	138	96	57	111	86	109	55	62	62	50	30	45	56	53	28	48	57	38	38	31	8	22	0		53	91	71	197	0			
Fossá á Skaga	5	6		34	62	98	94	26	14	25	8	22	32	20	22	24	12	22	20	25	10	16	14	17	17	13	15	16	32	12	29	21	28	25	98	5		
Laxá á Skaga	120	134	73	140	200	220	245	161	113	93	74	134	138	176	137	70	103	70	144	106	26	30	38	41	79	10	0	0	0	0	0	24	88	245	0			
Sæmundará	115	116	160	212	303	112	70	52	29	75		139	94																					93	303	18		
Húseyjarkvísl	112	118	141	158	194	84	107	52	54	90	77	105	104	101	73	113	89	103	245	160	80	73	71	70	94	39	32	47	52	63	162	110	150	101	245	32		
Hofsá í Vesturdal	23	2		15		12	16	10	23																										13	23	0	
Kolka					12	12	11	7				24													58	5	10	27	17	28	52	15	21	58	5			
Hrolleifsdalsá	20	24	28	41	41	65	17	4	4	7	4	25	15	24	10	18	16	18	16	55	7		4	1	13	1	4	11	6	3	8	12	16	17	65	1		
Flokkadalsá í Fjótum					71	40	22	54	2	10		22	68	38	64	119	135	44	164	136	15	2	21	15	40	30	12	22	37	24	36	23	18	47	164	2		
Fjótá	204	189	173	269	316	199	165	125	71	60	68	83	150	112	93	323	388	135	282	203	78	102	73	119	284	51	49	114	152	49	256	259	86	160	388	49		
Eyjafjarðará					27	71	21	14	7	11	11	13	13	10	6	40	22	54	33	15	17	10	15	27	8	3	10	3	12	16	10	5	18	71	3			
Fnijská	386	268	250	273	554	446	527	257	323	98	107	120	144	93	124	112	121	135	554	411	128	60	95	156	286	157	197	146	311	166	444	460	383	247	554	60		
Skjálfandafjót	92	67	412	288	336	317	426	108	169	100	165	679	721	503	379	431	493	318	862	907	379	273	353	277	263	520	379	208	472	346	932	556	675	406	932	67		
Laxá í Aðaldal	1817	2326	1777	2699	3063	2372	2324	1455	1304	1109	1256	1911	2730	2422	2255	1619	1543	1439	2295	1983	1226	1116	1047	1227	1928	845	916	1042	1189	624	947	1025	825	1651	3063	624		
Reykjadalssá og Eyvind	337	264	133	593	657	492	321	271	114	210	155	344	373	241	435	241	272	191	280	249	110	119	132	109	65	64	39	87	25	90	89	138	102	222	657	25		
Mýrarkvísl	210	201	121	181	221	197	169	242	179	248	215	388	490	252	287	239	188	243	390	266	139	234	160	270	212	122	49	83	258	103	357	385	306	230	490	49		
Ormarsá	123	117	147	275	286	119	124	54	45	87	73	203	350	275	278	264	187	156	335	366	169	163	181	141	134	108	163	143	199	233	295	216	187	188	366	45		
Deildará	158	189	168	224	357	164	111	93	27	55	69	234	253	178	173	145	142	88	281	391	173	206	82	141	192	65	144	122	194	93	273	177	135	167	391	27		
Svalbarðsá	234	172	155	240	257	158	167	51	36	41	29	161	171	176	198	238	135	136	289	384	145	215	177	98	159	124	92	143	236	291	231	292	283	176	384	29		
Sandá	288	238	315	474	418	411	380	138	53	47	35	257	340	403	290	182	81	100	354	434	204	209	152	91	177	190	143	128	212	151	197	260	268	230	474	35		
Hölná	135	118	92	219	130	66	73	26	26	25	11	109	121	131	144	105	91	55	150	130	45	78	44	36	53	47	59	77	84	105	84	140	135	88	219	11		
Hafralónsá	343	302	227	312	276	264	180	36	60	52	25	132	223	296	361	313	223	123	266	402	147	234	222	221	260	254	315	303	294	237	206	365	424	234	402	25		
Mjólfjarðará við Bakkafj.	147	144	183	248	242	135	80	39	15	39	32	116	168	206	186	235	136	101	192	172	60	170	96	101	145	116	108	98	165	152	141	195	155	136	248	15		
Selá í Vopnafirði	589	711	845	1463	1394	767	637	192	168	229	123	627	1258	1523	1102	895	634	772	1318	1092	631	1160	737	685	1140	991	1360	1108	1653	1558	1670	2316	2726	980	2316	123		
Vesturdalsá	391	329	326	513	498	268	141	42	34	61	47	280	197	380	231	226	163	116	264	321	218	329	201	216	159	71	129	124	269	175	88	102	104	216	513	34		
Hofsá og Sunnudalsá	1277	1117	1253	1273	1336	599	615	145	141	258	185	1219	1631	1710	1210	809	552	642	2238	2028	1012	1028	826	607	1008	1020	804	906	1877	1483	1864	1965	2058	1082	2238	141		
Selífjót og Gíslá				77	32	19	7			6	15	16	65	70	32	12	5	26	42	90	98	16	32	8	18	25	20	22	41	26	31	47	60	45	35	98	5	
Fjarðará í Borgarf.eystri				44	27	13	5	1																														
Breiðdalsá	126	123	76	248	412	248	153	41	20	21	4	78	158	257	185	104	91	116	226	130	72	180	92	63	85	128	171	233	325	202	700	815	937	184	815	4		
Laxá í Nesjum																																						
Geitlandsá í V-Skaft.	56	162	59	99	91	88	65	59	42	51	46	49	26	32	62	47	74	93	66	27	20	38	52	47	30	12	14	31	41	36	19	13	23	51	162	12		
Eldvatn í Meðallandi	24	51	13	43	33	45	12	17	11	17	3	9	11	11	37	14	15	13	24	18	5	17	8	11	6	3	2	1	3	3	17	10	7	16	51	1		
Tungufjót			14	34	43	74	46	16	20	36	28	23	36	20	25	9	11	21	49	63	35	22	28	10	30	8	7	11	22	25	31	21	8	27	74	7		
Kerlingardalsá og Vatnsá					28	33	16	57	48	90	49	47			144	78	107	107	169	130	95	73	75	80	98	65	41	32	60	38	4							



Table 17 Catch of brown trout in some Icelandic rivers 1987 - 2006. Migratory and stationary stocks are included.

River	Y E A R																				Average catch	Max catch	Min catch
	1987	1988	1989	1990	1991	1992	1993	1994	1995	1996	1997	1998	1999	2000	2001	2002	2003	2004	2005	2006			
Laxá í Leiðarsveit	157	1448	194	219	221	223	180	183	153	157	116	189	239	176	209	406	179	241	97	104	255	1448	97
Andakilsá	4	6	1	5	0	2	1	0	3	1	7	3	4	8	4	2	67	9	3	3	7	67	0
Hvítá í Borgarfirði	152	190	99	192	0	149	155	364	305	722	264	583	358	924	663	486	662	729	992	617	430	992	0
Grímsá og Tunguá	71	49	49	74	4	216	108	357	188	30	136	213	189	250	291	313	175	339	119	171	167	357	4
Þverá og Kjarra	35	80	36	99	0	121	98	109	152	247	101	247	263	463	266	258	299	375	147	180	179	463	0
Álftá	29	46	57	108	184	191	156	220	251	261	298	332	324	443	338	179	238	309	269	189	221	443	29
Hítará	5	17	14	30	23	23	39	0	34	61	33	25	30	29	28	38	36	42	43	27	29	61	0
Hörudalsá	7	0	5	8	0	0	0	0	0	0	0	0	0	0	0	0	0	0	0	0	1	8	0
Miðá og Tunguá	0	0	0	1	0	4	0	1	0	0	0	0	0	2	2	0	0	0	0	0	1	4	0
Haukadalsá neðri	0	0	1	0	0	4	0	0	0	0	0	0	0	0	1	1	0	0	1	0	0	4	0
Haukadalsá efri	0	0	0	3	1	0	1	0	14	0	2	0	7	1	0	5	1	0	0	0	2	14	0
Staðarhólsá og Hvolsá	3	2	3	2	6	3	1	2	1	2	4	2	2	2	3	1	3	28	0	0	4	28	0
Fjarðarhornsá	0	2	1	0	0	0	0	0	0	0	0	0	0	0	0	0	0	0	1	3	0	3	0
Selá í Steingrímsfirði	0	0	0	0	0	0	0	0	0	0	0	0	0	0	0	0	0	1	0	0	0	1	0
Staðará í Steingrímsfirði	0	0	0	0	1	0	0	0	0	0	0	0	0	0	0	0	0	0	0	0	1	14	0
Hrútafjarðará og Siká	1	1	0	2	7	1	0	0	2	1	2	0	1	0	1	2	4	0	2	5	2	7	0
Miðfjarðará	20	16	7	58	41	6	10	7	9	3	2	15	6	9	6	22	37	12	26	16	58	2	2
Viðisdalsá og Fitjá	0	3	26	13	41	34	23	14	16	42	52	316	80	151	143	198	60	307	364	166	102	364	0
Vatnsdalsá	366	685	245	667	571	506	335	388	450	318	300	617	520	695	807	670	729	729	684	1567	592	1567	245
Fremri Laxá á Ásum	1069	2352	338	2965	4121	3911	2709	2744	2011	1301	2379	2567	2496	2980	3278	3666	3646	4602	3884	5279	2915	5279	338
Húseyjarvísl	60	7	12	426	476	483	369	540	373	349	407	373	349	397	277	559	587	427	330	397	360	587	7
Hrollreiðsdalsá	0	13	7	34	102	59	53	113	32	126	86	73	81	87	75	173	137	326	88	326	88	326	0
Flókadalsá	87	27	93	111	109	54	82	0	81	29	36	169	244	263	249	419	401	398	311	166	419	0	0
Fljótaá	0	3	0	10	0	0	0	0	0	1	0	0	0	0	1	0	1	0	0	0	1	10	0
Svarfaðardalsá				24	44	23	40	18	44	26	39	30	52	156	111	80	61	123	65	59	156	18	18
Hörgá				23	79	25	24	38	11	46	43	26	36	39	31	8	43	93	49	25	38	93	8
Eyjafljótdal	34	49	26	67	165	86	100	153	130	146	138	142	169	241	202	352	418	483	389	232	186	483	26
Fnjóská	20	8	14	14	31	25	12	45	27	31	53	25	44	22	28	40	73	79	111	49	38	111	8
Skjálfandafjót	591	894	150	119	79	88	44	53	6	18	25	89	69	17	70	55	35	68	50	69	90	591	6
Laxá í Aðaldal	835	1079	1275	1465	1286	1307	705	900	594	929	1068	1232	1647	1796	1542	905	1386	1513	1149	1175	1796	594	594
Laxá í Lavárdal	807	1075	1012	606	708	508	679	723	713	1020	1981	2099	2111	1848	1681	1703	1812	1982	1742	1306	2111	508	508
Laxá í Mývatnsveit	2351	3786	3235	2186	1905	1808	1263	1558	1765	2680	5966	4214	4411	4015	2845	3388	4481	5933	5972	3356	5972	1263	1263
Litlaá	710	610	422	784	684	730	583	464	416	269	427	466	512	1662	922	1022	1014	626	393	669	1662	269	269
Ormarsá	35	50	21	20	31	28	15	42	9	33	17	11	18	35	44	42	97	92	82	56	39	97	9
Selá í Vopnaf.	3	8	10	14	9	2	4	2	8	9	6	5	14	8	5	9	7	18	3	4	7	18	2
Vesturdalsá	3	1	9	5	4	4	0	6	1	1	0	0	19	2	0	0	0	0	0	2	3	19	0
Höfsá og Sunnudalsá	11	8	53	31	50	43	54	22	24	30	49	32	29	39	27	34	58	133	113	75	46	133	8
Gilsá og Selfjót	33	12	15	72	70	53	39	20	27	45	77	67	34	88	54	65	93	92	240	133	66	240	12
Breiðdalsá	197	31	15	148	169	245	117	307	242	306	375	214	146	143	315	285	517	549	657	517	275	657	15
Geirlandsá	362	303	356	193	88	109	108	118	251	235	389	274	151	237	159	193	140	404	231	187	224	404	88
Skaftá	977	715	725	221	436	366	464	612	388	813	969	407	456	550	836	1305	1152	1093	1038	1171	735	1305	221
Eldvatn í Meðallandi	84	170	92	35	27	38	112	129	171	192	161	215	57	53	58	78	76	151	168	172	112	215	27
Grenlækur	700	894	1425	1648	2640	2338	3311	3638	2730	2493	1679	1293	1264	864	1331	1189	1700	1429	940	1763	3638	700	700
Tungufjót	62	67	148	84	134	134	249	156	174	239	384	224	273	286	286	347	345	529	380	324	241	529	62
Heiðarvatn				215	399	301	373	284	255	116	102	212	269	277	326	609	378	410			302	609	102
Rangár og Fiská				179	163	527	359	337	230	393	635	468	487	494	547	216	772	934	594	398	455	934	163
Ölfusá				60	29	44	70	52	58	366	53	103	161	513	399	301	911	741	1006	227	797	246	29
Sog	2	6	8	6	10	7	6	11	15	29	23	37	40	28	27	43	22	34	104	63	26	104	2
Hróarholtslækur	403	550	465	322	391	449	301	580	374	326	492	1011	680	765	931	949	924	920	1266	914	651	1266	301

Table 18. Catch of Arctic charr in some Icelandic rivers 1987 - 2006. Migratory and stationary stocks are included.

River	Y E A R																			Avarage catch	Max catch	Min catch	
	1987	1988	1989	1990	1991	1992	1993	1994	1995	1996	1997	1998	1999	2000	2001	2002	2003	2004	2005				2006
Laxá í Leirársveit	0	7	7	1	4	6	18	14	21	4	35	62	42	43	124	48	24	30	5	7	25	124	0
Andakilsá	10	231	284	479	3	341	0	3	218	189	238	116	84	131	294	194	203	282	147	49	175	479	0
Hvítá í Borgarfirði	27	9	15	19	613	88	106	14	12	4	4	78	11	2	886	653	601	664	342	312	223	886	2
Grimsó og Tunguá	1	2	2	24	250	12	3	6	1	1	0	4	4	1	7	4	1	2	1	1	16	250	0
Þverá og Kjarrá	3	9	111	76	113	14	35	25	9	7	63	2	5	8	19	13	15	10	3	5	27	113	2
Álftá	0	1	2	1	4	6	10	9	2	3	6	6	0	7	0	4	2	3	0	5	4	10	0
Hitará	193	134	132	234	518	396	184	0	259	131	426	7	344	146	136	129	126	80	57	23	183	518	0
Höröudalsá	18	291	231	614	451	340			271	423	361	1021	1003	453	907			81	80	11	410	1021	11
Mjóá og Tunguá		73	70	470	478	650	530	411	674	350	396	825	925	591	1009	593	273	432	184	120	477	1009	70
Haukadalsá neðri	679	7	21	8	74	8	57	111	71	8	36	12	58	42	22	19	50	30	21	20	68	679	7
Haukadalsá efri		22	14	237	919	149	267		590	739	593	892	949	731	93	644	453	276	278	135	443	949	14
Staðarhólsá og Hvolsá	401	224	338	941	882	397	616	733	934	1490	1316	1469	1016	949	583	439	487	1000	375		768	1490	224
Fjarðarhornská	20	107	306	562	536	233	73	80	135	165			47		93	129	116	179	100	273	186	562	20
Selá í Steingrímsfirði	261	12	229	334	259	77	404	145	356			171	246	529	0	90	68	640	217	81	229	640	0
Staðará í Steingrímsfirði	584	35	13	183	385	265	254	163	201	92	164	288	76	297	275						218	584	13
Hrítafjarðará og Siká	269	59	68	221	532	192	135	129	221	499	363	564	346	610	358	221	303	180	158	159	279	610	59
Mjófjarðará	236	167	89	221	273	152	97	123	144	47	267	304	277	97	316	148	225	235	180	216	191	316	47
Víðdalsá og Fítjá	1325	366	26	377	547	467	676	1214	3485	2782	1551	5568	3824	3138	1903	1143	2144	3004	1118	1460	1806	5568	26
Vatnsdalsá	727	1182	270	1642	1851	1112	1427	1058	812	2498	1861	1438	2755	2712	1919	1975	1430	1186	779	724	1468	2755	270
Fremri Laxá á Ásum	137	236	15	34	52	35	6	26	41	61	52	64	27	153	53	23	8	12	0	3	52	236	0
Húseyjarkvísl	7	2	8	64	28	17	32	44	48	45	30	46	17	8	18	14	27	12	6	27	25	64	2
Hróllleifsdalsá		47	45	221	401	410	381	628		218	198	377	325	311	281	397	409	346	261	166	301	628	45
Flökadalsá	110	1028	280	2134	2198	1144	1040	1673	489	265	1135	655	2405	775	1539	1169	2279	2473	1084	499	1219	2473	110
Fljótaá		1	44	627	643	881	1242	7071	6928	6931	1648	893	792	944	298	164	288	508	215	357	1604	7071	1
Svarfáardalsá				873		1049	668	1691	358	417	475	526	704	560	842	378	310	407	311	567	634	1691	310
Hörgá				1692	1394	1238	1783	1590	1063	1245	1293	1229	856	1216	1373	1110	935	964	896	670	1209	1783	670
Eyjafljótdará	1557	1467	127	2123	2836	3095	3080	3319	2151	2098	3625	3137	2900	2620	2931	1954	1678	2052	1516	916	2259	3625	127
Fnjóska	496	217	238	390	469	239	251	550	391	339	409	579	700	612	695	370	736	545	355	781	468	781	217
Skjálfafljót	275	338	561	391	331	160	173	198	151	214	506	403	658	1034	356	357	338	239	116	218	351	1034	116
Laxá í Aðaldal	35	187	114	137	86	48	114	57	52	29	64	52	48	115	121	91	37	27	22	8	72	187	8
Laxá í Laxárdal		18	0	13	8	1	4	1	2	6	18	83	3	13	3	2	8	3	8	1	10	83	0
Laxá í Myvatnssveit		1	63	3	2	2	1	0	1	1	24	329	142	28	2	2	0	13	13	15	34	329	0
Litlaá		297	307	310	368	551	259	220	193	131	104	97	123	117	388	199	249	97	110	31	218	551	31
Ormarsá	245	114	141	181	175	127	131	126	103	101	68	93	129	128	56	62	53	30	109	60	112	245	30
Selá í Vopnaf.	249	56	52	211	105	103	51	106	84	164	115	37	55	72	53	49	63	60	50	18	88	249	18
Vesturdalsá	506	51	78	513	1402	726	321	383	474	872	1080	457	815	864	1079	502	1002	557	342	223	612	1402	51
Hofsá og Sunnudalsá	357	32	143	67	357	471	268	261	183	344	250	246	557	744	30	207	276	559	247	154	288	744	30
Gílsá og Selfjót	230	61	71	455	382	368	242	381	261	532	421	221	340	375	469	426	447	491	429	347	347	532	61
Breiðdalsá	453	74	70	600	22	23	410	369	977	396	197	235	415	601	1121	567	628	881	1193	405	482	1193	22
Geirlandsá	60	69	48	29	50	43	40	39	48	43	28	26	27	54	44	50	44	38	21	8	40	69	8
Skafá	17	19	12	1	5	7	19	28	13	21	16	19	27	42	25	33	14	13	5	25	18	42	1
Eldvatn í Meðallandi	21	22	3	21	3	27	19	6	60	114	61	29	27	16	50	48	39	61	19	67	36	114	3
Grænslækur	78	12	151	247	177	288	273	403	290	294	223	114	128	212	283	209	267	252	145		213	403	12
Tungufjót	63	37	28	107	65	46	43	85	67	60	53	52	52	40	66	130	62	79	74	23	62	130	23
Heiðarvatn		106	203	213	319	159	296	131	89	498	616	385	331	1021	188	433					333	1021	89
Rangár og Fiská			75	65	106	90	83	94	165	150	72	54	95	88	75	89	50	40	20		83	165	20
Ólfusá		8	7	12	17	12	10	72	40	20	30	21	11	16	26	26	21	16	7	6	20	72	6
Sog	255	312	227	426	558	173	130	209	316	914	754	860	455	451	765	752	529	508	449	102	457	914	102
Hróarholtslækur	13	134	110	144	84	172	92	136	169	360	80	113	96	55	52	84	38	65	21	13	102	360	13

**Table 19.** Catch in nets in 2006 in numer and weight (kg).

Area Area/River	Salmon		Brown trout		Arctic charr	
	number	weight	number	weight	number	weight
<b>Reykjanes</b>	<b>0</b>	<b>0</b>	<b>0</b>	<b>0</b>	<b>0</b>	<b>0</b>
Borgarfjörður netaveiði í sjó	2	6	460	460	141	141
Hvítá Borg. neðri hluti	33	99	455	455	436	436
Hvítá efríhl. og Norðurlingfl.	0	0	16	16	9	9
Þverá Kjarrá	40	200	0	0	0	0
<b>Vesturland</b>	<b>75</b>	<b>305</b>	<b>931</b>	<b>931</b>	<b>586</b>	<b>586</b>
Hvannadalsá #	10	43	0	0	0	0
Laugardalsá #	9	30	0	0	0	0
<b>Vestfirðir</b>	<b>19</b>	<b>73</b>	<b>0</b>	<b>0</b>	<b>0</b>	<b>0</b>
Héraðsvötn	13	65	74	110	763	527
Miðfjörður			1	1	3	3
<b>Norðurland vestra</b>	<b>13</b>	<b>65</b>	<b>74</b>	<b>110</b>	<b>763</b>	<b>527</b>
Skjálfandaflljót	49	172	0	0	246	246
Vestmannsvatn	5	15	1000	1000	1000	1000
<b>Norðurland eystra</b>	<b>54</b>	<b>187</b>	<b>1000</b>	<b>1000</b>	<b>1246</b>	<b>1246</b>
Lagarfljót	131	445	0	0	0	0
<b>Austurland</b>	<b>131</b>	<b>445</b>	<b>0</b>	<b>0</b>	<b>0</b>	<b>0</b>
Skaftá	8	20	287	566	2	2
Tungulækur #	0	0	198	515	0	0
Kúðaflljót	15	54	205	679	0	0
Mjóásvatn (Álftaveri) *						
Markarfljót *						
Kvíslaveitur *						
Veðivötn			2284	3127	1655	875
Apavatn			15401	460	6480	3316
Laugarvatn			53	47	572	236
Villingavatnsá			58	87	21	41
Þjórsá	3327	8976	451	977	2	3
Hvítá í Árnassýslu	987	2847	134	273	113	84
Ölfusá	1324	3580	262	174	10	7
<b>Suðurland</b>	<b>5661</b>	<b>15477</b>	<b>19333</b>	<b>6905</b>	<b>8855</b>	<b>4564</b>
<b>Samtals</b>	<b>5953</b>	<b>16552</b>	<b>21338</b>	<b>8946</b>	<b>11450</b>	<b>6923</b>

\* no records